



ZytoLight

SPEC ALK Dual Color Break Apart Probe

REF	Z-2124-50	Σ	5 (0.05 ml)
REF	Z-2124-200	Σ	20 (0.2 ml)

For the qualitative detection of translocations involving the human ALK gene at 2p23.1-p23.2 by fluorescence *in situ* hybridization (FISH)



In vitro diagnostic medical device
according to EU directive 98/79/EC

1. Intended use

The ZytoLight SPEC ALK Dual Color Break Apart Probe (PL81) is intended to be used for the qualitative detection of translocations involving the human ALK gene at 2p23.1-p23.2 in formalin-fixed, paraffin-embedded specimens by fluorescence *in situ* hybridization (FISH). The probe is intended to be used in combination with the ZytoLight FISH-Tissue Implementation Kit (Prod. No. Z-2028-5/-20).

Interpretation of the results must be made within the context of the patient's clinical history with respect to further clinical and pathologic data of the patient by a qualified pathologist.

2. Clinical relevance

ALK (ALK receptor tyrosine kinase) encodes a transmembrane receptor tyrosine kinase. This gene exerts characteristic oncogenic activities through fusion to several gene partners or mutations both in hematopoietic and non-hematopoietic solid tumors. Translocations affecting the ALK gene locus are frequently found in anaplastic large cell lymphoma (ALCL), an aggressive non-Hodgkin lymphoma arising from T-cells. The most frequent translocation t(2;5) results in a fusion with the NPM1 (nucleophosmin a.k.a. nucleolar phosphoprotein B23, numatrin) gene located on chromosome 5q35. This rearrangement results in a NPM1-ALK (analog EML4-MK) fusion protein, which is constitutively activated through autophosphorylation, and that in turn mediates malignant cell transformation by activating downstream effectors like e.g. STAT3. Additionally, inversions affecting the ALK gene located on the short arm of chromosome 2 [inv(2)(p21p23)] have been frequently detected in non-small cell lung cancer (NSCLC) and lead to the formation of EML4-ALK fusion transcripts. ALK kinase targeted therapies may represent a very effective therapeutic strategy in NSCLC patients carrying EML4-ALK rearrangements.

3. Test principle

The fluorescence *in situ* hybridization (FISH) technique allows for the detection and visualization of specific nucleic acid sequences in cell preparations. Fluorescently-labeled DNA fragments, so called FISH probes, and their complementary target DNA strands in the preparations are co-denatured and subsequently allowed to anneal during hybridization. Afterwards, unspecific and unbound probe fragments are removed by stringency washing steps. After counterstaining the DNA with DAPI, hybridized probe fragments are visualized using a fluorescence microscope equipped with excitation and emission filters specific for the fluorochromes with which the FISH probe fragments have been directly labeled.

4. Reagents provided

The ZytoLight SPEC ALK Dual Color Break Apart Probe is composed of:

- ZyGreen (excitation 503 nm/emission 528 nm) labeled polynucleotides (~10 ng/ μ l), which target sequences mapping in 2p23.1-p23.2* (chr2:29,460,144-30,095,822) proximal to the ALK breakpoint region (see Fig. 1).
- ZyOrange (excitation 547 nm/emission 572 nm) labeled polynucleotides (~4.5 ng/ μ l), which target sequences mapping in 2p23.2* (chr2:29,174,204-29,383,335) distal to the ALK breakpoint region (see Fig. 1).
- Formamide based hybridization buffer

*according to Human Genome Assembly GRCh37/hg19

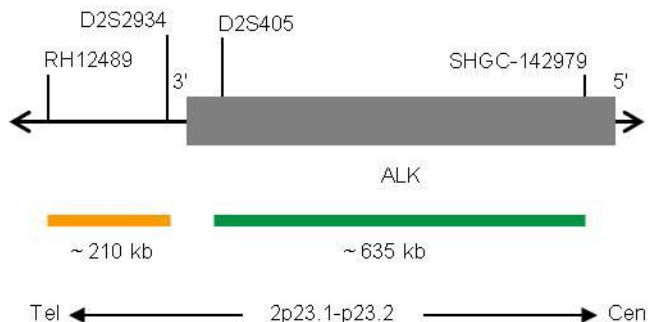


Fig. 1: SPEC ALK Probe map (not to scale)

The ZytoLight SPEC ALK Dual Color Break Apart Probe is available in two sizes:

- Z-2124-50: 0.05 ml (5 reactions of 10 μ l each)
- Z-2124-200: 0.2 ml (20 reactions of 10 μ l each)

5. Materials required but not provided

- ZytoLight FISH-Tissue Implementation Kit (Prod. No. Z-2028-5/-20)
- Positive and negative control specimens
- Microscope slides, positively charged
- Water bath (37°C, 98°C)
- Hybridizer or hot plate
- Hybridizer or humidity chamber in hybridization oven
- Adjustable pipettes (10 μ l, 25 μ l)
- Staining jars or baths
- Timer
- Calibrated thermometer
- Ethanol or reagent alcohol
- Xylene
- Deionized or distilled water
- Coverslips (22 mm x 22 mm, 24 mm x 60 mm)
- Rubber cement, e.g., Fixogum Rubber Cement (Prod. No. E-4005-50/-125) or similar
- Adequately maintained fluorescence microscope (400-1000x)
- Immersion oil approved for fluorescence microscopy
- Appropriate filter sets

6. Storage and handling

Store at 2-8°C in an upright position protected from light. Use protected from light. Return to storage conditions immediately after use. Do not use reagents beyond expiry date indicated on the label. The product is stable until expiry date indicated on the label when handled accordingly.

7. Warnings and precautions

- Read the instruction for use prior to use!
- Do not use the reagents after the expiry date has been reached!
- This product contains substances (in low concentrations and volumes) that are harmful to health and potentially infectious. Avoid any direct contact with the reagents. Take appropriate protective measures (use disposable gloves, protective glasses, and lab garments)!
- If reagents come into contact with skin, rinse skin immediately with copious quantities of water!
- A material safety data sheet is available on request for the professional user.
- Do not reuse reagents.
- Avoid cross-contamination of samples as this may lead to erroneous results.
- The probe should not be exposed to light, especially strong light, for a longer period of time, i.e., all steps should be accomplished, where possible, in the dark and/or using lightproof containers!

Hazard and precautionary statements:

The hazard determining component is Formamide.



Danger

H351	Suspected of causing cancer.
H360FD	May damage fertility. May damage the unborn child.
H373	May cause damage to organs through prolonged or repeated exposure.
P201	Obtain special instructions before use.
P202	Do not handle until all safety precautions have been read and understood.
P260	Do not breathe dust/fume/gas/mist/vapours/spray.
P280	Wear protective gloves/protective clothing/eye protection/face protection.
P308+P313	IF exposed or concerned: Get medical advice/attention.
P405	Store locked up.

8. Limitations

- For *in vitro* diagnostic use.
- For professional use only.
- The clinical interpretation of any positive staining, or its absence, must be done within the context of clinical history, morphology, other histopathological criteria as well as other diagnostic tests. It is the responsibility of a qualified pathologist to be familiar with the FISH probes, reagents, diagnostic panels, and methods used to produce the stained preparation. Staining must be performed in a certified, licensed laboratory under the supervision of a pathologist who is responsible for reviewing the stained slides and assuring the adequacy of positive and negative controls.
- Specimen staining, especially signal intensity and background staining, is dependent on the handling and processing of the specimen prior to staining. Improper fixation, freezing, thawing, washing, drying, heating, sectioning, or contamination with other specimens or fluids may produce artefacts or false results. Inconsistent results may result from variations in fixation and embedding methods, as well as from inherent irregularities within the specimen.
- The probe should be used only for detecting loci described in 4. "Reagents provided".

- The performance was validated using the procedures described in this instruction for use. Modifications to these procedures might alter the performance and have to be validated by the user.

9. Interfering substances

Red blood cells present in the specimen might exhibit autofluorescence which hinders signal recognition.

The following fixatives are incompatible with FISH:

- Bouin's fixative
- B5 fixative
- Acidic fixatives (e.g., picric acid)
- Zenker's fixative
- Alcohols (when used alone)
- Mercuric chloride
- Formaldehyde/zinc fixative
- Hollande's fixative
- Non-buffered formalin

10. Preparation of specimens

Recommendations:

- Fixation in 10% neutrally buffered formalin for 24 h at room temperature (18-25°C).
- Sample size $\leq 0.5 \text{ cm}^3$.
- Use premium quality paraffin.
- Embedding should be carried out at temperatures lower than 65°C.
- Prepare 2-4 μm microtome sections.
- Use positively charged microscope slides.
- Fix for 2-16 h at 50-60°C.

11. Preparatory treatment of the device

The product is ready-to-use. No reconstitution, mixing, or dilution is required. Bring probe to room temperature (18-25°C) before use, protect from light. Prior to opening the vial, mix by vortexing and spin down briefly.

12. Assay procedure

Specimen pretreatment

Perform specimen pretreatment (dewaxing, proteolysis) according to the instructions for use of the [ZytoLight FISH-Tissue Implementation Kit](#).

Denaturation and hybridization

1. Pipette 10 μl of the probe onto each pretreated specimen.
 2. Cover specimens with a 22 mm x 22 mm coverslip (avoid trapped bubbles) and seal the coverslip.
- We recommend using rubber cement (e.g., Fixogum) for sealing.*
3. Place slides on a hot plate or hybridizer and denature specimens for 10 min at 75°C.
 4. Transfer slides to a humidity chamber and hybridize overnight at 37°C (e.g., in a hybridization oven).

It is essential that specimens do not dry out during the hybridization step.

Post-hybridization

Perform post-hybridization processing (washing, counter-staining, fluorescence microscopy) according to the instructions for use of the [ZytoLight FISH-Tissue Implementation Kit](#).

13. Interpretation of results

With the use of appropriate filter sets, the hybridization signals of the probe appear green (proximal to the ALK breakpoint region) and orange (distal to the ALK breakpoint region).

Normal situation: In interphases of normal cells or cells without a translocation involving the ALK gene region, two green/orange fusion signals appear (see Fig. 2).

Aberrant situation: One ALK gene region affected by a translocation is indicated by one separate green signal and one separate orange signal. An EML4-ALK inversion with deletion of 5'-ALK sequences is indicated by one or multiple isolated orange signals (see Fig. 2).

Overlapping signals may appear as yellow signals.

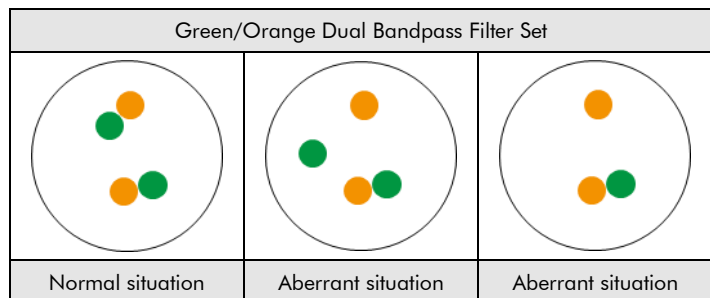


Fig. 2: Expected results in normal and aberrant nuclei

Genomic aberrations due to small deletions, duplications or inversions might result in inconspicuous signal patterns. Other signal distribution may be observed in some abnormal samples which might result in a different signal pattern than described above, indicating variant rearrangements. Unexpected signal patterns should be further investigated.

Please note:

- Due to decondensed chromatin, single FISH signals can appear as small signal clusters. Thus, two or three signals of the same size, separated by a distance ≤ 1 signal diameter, should be counted as one signal.
- Do not evaluate overlapping nuclei.
- Do not count over-digested nuclei (recognized by dark areas visible inside of the nuclei).
- Do not count nuclei with strong auto-fluorescence, which hinders signal recognition.
- A negative or unspecific result can be caused by multiple factors (see chapter 17).
- In order to correctly interpret the results, the user must validate this product prior to use in diagnostic procedures according to national and/or international guidelines.

14. Recommended quality control procedures

In order to monitor correct performance of processed specimens and test reagents, each assay should be accompanied by internal and external controls. If internal and/or external controls fail to demonstrate appropriate staining, results with patient specimens must be considered invalid.

Internal control: Non-neoplastic cells within the specimen that exhibit normal signal pattern, e.g., fibroblasts.

External control: Validated positive and negative control specimens.

15. Performance characteristics

Accuracy: The location of hybridization of the probe was evaluated on metaphase spreads of a karyotypically normal male. In all tested specimens the probe hybridized solely to the expected loci. No additional signals or cross-hybridizations were observed. Therefore, the accuracy was calculated to be 100%.

Analytical sensitivity: For the analytical sensitivity assessment, the probe was evaluated on metaphase spreads of karyotypically normal males. All nuclei showed the expected normal signal pattern in all tested specimens. Therefore, the analytical sensitivity was calculated to be 100%.

Analytical specificity: For the analytical specificity assessment, the probe was evaluated on metaphase spreads of karyotypically normal males. In

all tested specimens, all signals hybridized solely to the expected target loci and no other loci. Therefore, the analytical specificity was calculated to be 100%.

16. Disposal

The disposal of reagents must be carried out in accordance with local regulations.

17. Troubleshooting

Any deviation from the operating instructions can lead to inferior staining results or to no staining at all.

Weak signals or no signals at all

Possible cause	Action
No target sequences available	Use appropriate controls
Cell or tissue sample not fixed properly	Optimize fixing time and fixative or apply a post-fixation step as described in "assay procedure" of the manual of the ZytoLight FISH-Tissue Implementation Kit
Heat pretreatment, proteolysis, denaturation, hybridization, or stringency wash temperature incorrect	Check temperature of all technical devices used, using a calibrated thermometer
Proteolytic pretreatment not carried out properly	Optimize pepsin incubation time, increase or decrease if necessary
Probe evaporation	When using a hybridizer, the use of the wet stripes/water filled tanks is mandatory. When using a hybridization oven, the use of a humidity chamber is required. In addition, the coverslip should be sealed completely, e.g., with Fixogum, to prevent drying-out of the sample during hybridization
Too low concentrated stringency wash buffer	Check concentration of stringency wash buffer
Old dehydration solutions	Prepare fresh dehydration solutions
Fluorescence microscope adjusted wrongly	Adjust correctly
Inappropriate filter sets used	Use filter sets appropriate for the fluochromes of the probe. <i>Triple-bandpass filter sets provide less light compared to single or dual-bandpass filter sets. Consequently, the signals may appear fainter using these triple-bandpass filter sets</i>
Photo-damage of the probes/fluorophores	Accomplish hybridization and washing steps in the dark

Cross hybridization signals; noisy background

Possible cause	Action
Incomplete dewaxing	Use fresh solutions; check duration of dewaxing
Proteolytic pretreatment too strong	Reduce pepsin incubation time
Probe volume per area too high	Reduce probe volume per section/area, distribute probe dropwise to avoid local concentration
Slides cooled to room temperature before hybridization	Transfer the slides quickly to 37°C
Too high concentrated stringency wash buffer	Check concentration of stringency wash buffer

Washing temperature following hybridization too low	Check temperature; increase if necessary
Dehydration of specimens between the individual incubation steps	Prevent dehydration by sealing the slides and performing incubation in a humid environment

Tissue morphology degraded

Possible cause	Action
Cell or tissue sample has not been fixed properly	Optimize fixing time and fixative or apply a post-fixation step as described in "assay procedure" of the manual of the <u>ZytoLight FISH-Tissue Implementation Kit</u>
Proteolytic pretreatment not carried out properly	Optimize pepsin incubation time, increase or decrease if necessary
Insufficient drying before probe application	Extend air-drying

Overlapping nuclei

Possible cause	Action
Inappropriate thickness of tissue sections	Prepare 2-4 µm microtome sections

Specimen floats off the slide

Possible cause	Action
Unsuitable slide coating	Use appropriate slides
Proteolytic pretreatment too strong	Reduce pepsin incubation time

Weak counterstain

Possible cause	Action
Low concentrated DAPI solution	Use <u>DAPI/DuraTect-Solution (ultra)</u> (Prod. No. MT-0008-0.8) instead
DAPI incubation time too short	Adjust DAPI incubation time

18. Literature

- Inamura K, et al. (2009) *Mod Pathol* 22: 508-15.
- Kievits T, et al. (1990) *Cytogenet Cell Genet* 53: 134-6.
- Koivunen JP, et al. (2008) *Clin Cancer Res* 14: 4275-83.
- Martelli MP, et al. (2009) *Am J Pathol* 174: 661-70.
- Palmer RH, et al. (2009) *Biochem J* 420: 345-61.
- Perner S, et al. (2008) *Neoplasia* 10: 298-302.
- Rodig SJ, et al. (2009) *Clin Cancer Res* 15: 5216-23.
- Sasaki T, et al. (2010) *Eur J Cancer* 46: 1773-80.
- Von Laffert M, et al. (2013) *Lung Cancer* 81: 200-6.
- Wilkinson DG: *In Situ Hybridization, A Practical Approach*, Oxford University Press (1992) ISBN 0 19 963327 4.
- Zhang Q, et al. (2007) *Nat Med* 11:1341-8.

Our experts are available to answer your questions. Please contact helptech@zytovision.com



ZytoVision GmbH
 Fischkai 1
 27572 Bremerhaven/ Germany
 Phone: +49 471 4832-300
 Fax: +49 471 4832-509
www.zytovision.com
 Email: info@zytovision.com

Trademarks:

ZytoVision® and ZytoLight® are trademarks of ZytoVision GmbH.