

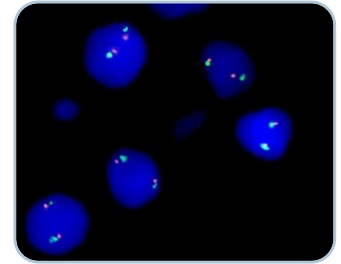
**ZytoLight® SPEC IKZF1/CEN 7 Dual Color Probe (Z-2304-50)**

The **ZytoLight SPEC IKZF1/CEN 7 Dual Color Probe** (Prod. No. Z-2304-50) is designed for the detection of deletions affecting the IKZF1 gene.

The IKZF1 gene is located on 7p12.2 and encodes a zinc finger transcription factor, which is required for normal hematopoietic differentiation and proliferation, particularly in lymphoid lineages.

Genomic deletions affecting the IKZF1 gene are found in approximately 15% of pediatric and ~40% of adult B-cell precursor acute lymphoblastic leukemia (B-ALL) cases. The frequency is remarkably high in BCR-ABL1-positive (~70%) and BCR-ABL1-like (~40%) pediatric B-ALL. The most frequent deletions in B-ALL affect the whole gene or exons 4 to 7.

IKZF1 deletions are associated with poor prognosis and high risk of relapse in cases of B-ALL. Hence, the detection of IKZF1 deletions by FISH may help in predicting the clinical outcome in patients with B-ALL.



*SPEC IKZF1/CEN 7 Dual Color Probe hybridized to normal interphase cells as indicated by two orange and two green signals in each nucleus.*

<https://www.zytovision.com/products/zytolight/z-2304>

- Product Data Sheet
- Instruction for Use
- MSDS

Prod. No.	Product	Label	Tests* (Volume)
Z-2304-50	ZytoLight SPEC IKZF1/CEN 7 Dual Color Probe	●/●	5 (50 µl)

*\*Using 10 µl probe solution per test.*

**Related Products**

**ZytoLight®** FISH-Cytology Implementation Kit - Product No. Z-2099-20

The probe is CE IVD registered and available as 5 test volume.

Please do not hesitate to contact us if you have any questions or comments. We hope that this information is helpful for you.