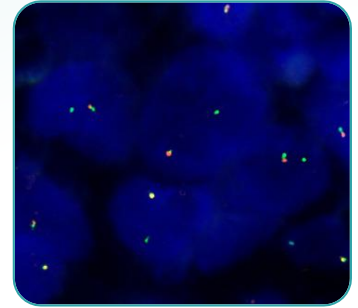


## ZytoMation® RET Dual Color Break Apart FISH Probe (Z-2316-5.1ML)

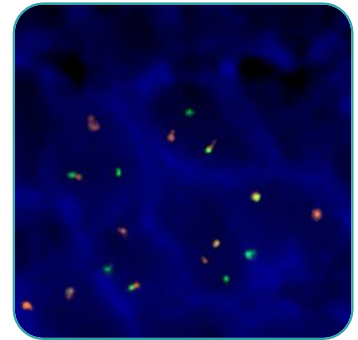
The **ZytoMation RET Dual Color Break Apart FISH Probe** (Product No. Z-2316-5.1ML) is an automation probe designed to detect translocations involving the chromosomal region 10q11.21 harboring the RET (ret proto-oncogene) gene. RET encodes a tyrosine kinase (TK) receptor. Translocations involving RET were first described in papillary thyroid carcinoma (PTC) where somatic rearrangements result in the fusion of its TK catalytic domain with an N-terminal dimerization domain encoded by various fusion partner genes. RET translocations are responsible for 1-2% of non-squamous NSCLCs. Similarly to ALK and ROS1, they are more characteristic for young non-smokers and females. This category of cancers is known to be responsive to treatment with RET tyrosine kinase inhibitors.



*Lung adenocarcinoma tissue section with rearrangement of the RET gene as indicated by isolated green signals.*

## ZytoMation® IGH Dual Color Break Apart FISH Probe (Z-2317-5.1ML)

The **ZytoMation IGH Dual Color Break Apart FISH Probe** (Product No. Z-2317-5.1ML) is an automation probe designed to detect translocations involving the chromosomal region 14q32.33 harboring the IGH locus. Rearrangements involving the IGH (immunoglobulin heavy locus, a.k.a. IGH@) gene locus are considered to be cytogenetic hallmarks for non-Hodgkin lymphoma (NHL). IGH locus rearrangements have been identified in about 50% of NHLs and are associated with specific subtypes of NHLs. Rearrangements involving 14q32.33 have unique biological characteristics and correlate with clinical, morphological, and immunophenotypic features. Fluorescence *in situ* Hybridization is a helpful tool for the diagnosis, selecting treatment, and giving prognostic information.



*Burkitt lymphoma tissue section with translocation of the IGH gene as indicated by one non-rearranged orange/green fusion signal, one orange and one separate green signal.*

### Prod. No.

Z-2316-5.1ML

Z-2317-5.1ML

### Product

ZytoMation RET Dual Color Break Apart FISH Probe

ZytoMation IGH Dual Color Break Apart FISH Probe

### Label



### Tests\* (Volume)

up to 20 (5.1 ml)

up to 20 (5.1 ml)

### Related Products

DS9636

Bond FISH Kit

*\*Using 240 µl probe solution per test.*

For more details about our **ZytoMation® FISH Probes** please visit our website:

<https://www.zytovision.com/products/zytomation/z-2316>

<https://www.zytovision.com/products/zytomation/z-2317>

- Datasheet
- Instruction for use
- MSDS

Both probes are registered as CE IVD and available as up to 20 test volume. ZytoVision is not affiliated or associated with Leica Biosystems.

Please do not hesitate to contact us if you have any questions or comments. We hope that this information is helpful for you.