

ZytoLight® SPEC ATM/CEN 11 Dual Color Probe (Z-2297-50)**ZytoLight® SPEC ATM/CEN 12 Dual Color Probe (Z-2296-50)**

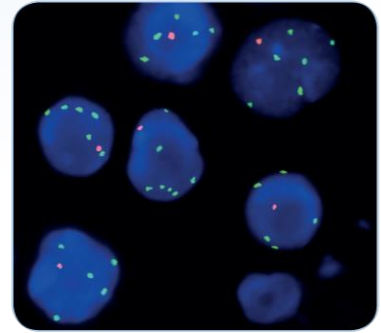
The **ZytoLight® SPEC ATM/CEN 11 Dual Color Probe** and the **ZytoLight® SPEC ATM/CEN 12 Dual Color Probe** are designed to detect deletions affecting ATM (a.k.a. TEL1) gene frequently found in CLL. The **ZytoLight® SPEC ATM/CEN 12 Dual Color Probe** detects copy CLL-typical trisomy 12 that follows a 11q22.3 deletion harboring the ATM gene.

<https://www.zytovision.com/products/zytolight/z-2297>

<https://www.zytovision.com/products/zytolight/z-2296>

- Product Data Sheet
- Instruction for Use
- MSDS

This probe is CE IVD registered and available as 5 test volume.



CLL with deletion of the ATM gene and amplification affecting the centromeric region of chromosome 12 as indicated by one orange signal and five or more green signals in each nucleus.

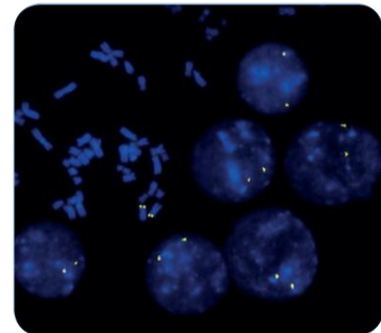
ZytoLight® SPEC JAK2 Dual Color Break Apart Probe (Z-2294-50)

The **ZytoLight® SPEC JAK2 Dual Color Break Apart Probe** is designed to detect rearrangements involving the chromosomal region 9p24.1 harboring the JAK2 gene. JAK2 translocations are associated with a poor prognosis and have been found in myeloproliferative neoplasms (MPNs), including CML as well as other hematologic malignancies, e.g., ALL.

<https://www.zytovision.com/products/zytolight/z-2294>

- Product Data Sheet
- Instruction for Use
- MSDS

This probe is CE IVD registered and available as 5 test volume.



SPEC JAK2 Break Apart Dual Color Probe hybridized to normal interphase cells as indicated by two orange/green fusion signals per nucleus and to metaphase chromosomes of a normal cell.

Related Products

ZytoLight® FISH-Tissue Implementation Kit - Product No. Z-2028-5/-20

ZytoLight® FISH-Cytology Implementation Kit - Product No. Z-2099-20

Please do not hesitate to contact us if you have any questions or comments. We hope that this information is helpful for you.